

[TI Home](#) > [Semiconductors](#) > [Microcontrollers \(MCU\)](#) > MSP430 LaunchPad Value Line Development kit

[Worldwide \(In Er](#)

MSP430 LaunchPad Value Line Development kit

(ACTIVE) MSP-EXP430G2

[Description & Features](#)

[Technical Documents](#)

[Support & Community](#)

[Order Now](#)

Key Document

[MSP-EXP430G2 Software Examples \(Rev. F\)](#) (ZIP 12075 KB)

29 Sep 2014 6,647 views

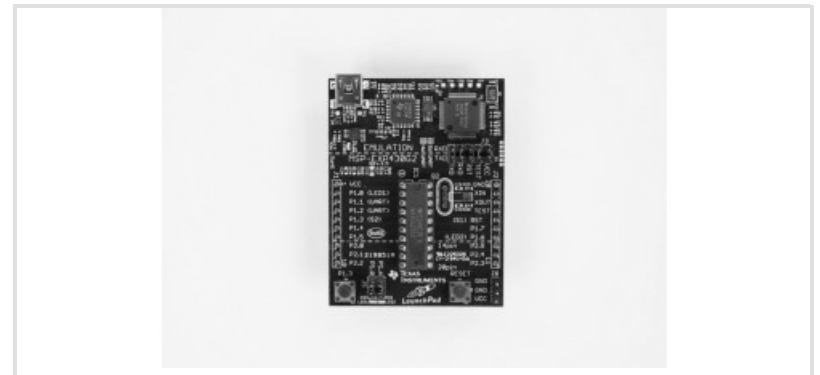
[MSP-EXP430G2 LaunchPad Development Kit User's Guide \(Rev. G\)](#) (PDF 894 KB)

18 Mar 2016 9,427 views

[MSP-EXP430G2 Hardware Design Files \(Rev. C\)](#) (ZIP 599 KB)

29 Sep 2014 4,528 views

[View All Technical Documents \(17\)](#)



Description

Important Note:

The MSP-EXP430G2 LaunchPad is not supported by the Mac or Linux versions of the Code Composer Studio™ Integrated Development Environment. If you want to work with these operating systems, we suggest you select one of the many other [MSP LaunchPads](#).

The [MSP-EXP430G2 LaunchPad Development Kit](#) is an easy-to-use microcontroller development board for the low-power and low-cost MSP430G2x MCUs. It has on-board emulation for programming and debugging and features a 14/20-pin DIP socket, on-board buttons and LEDs & BoosterPack Plug-in Module pinouts that support a wide range of modules for added functionality such as wireless, displays & more.

The MSP-EXP430G2 LaunchPad also comes with 2 MSP430 devices, with up to 16kB Flash, 512B

Start developing on MSP platforms quickly and easily



Learn more about MSP430 Ultra-Low Power 16-bit and MSP432 Low-Power + Performance 32-bit MCU development tools and software available to you.

[more](#)

RAM, 16MHz CPU speed and integrated peripherals such as 8ch 10-bit ADC, timers, serial communication (UART, I2C & SPI) & more!

You can browse all documentation online with [TI Resource Explorer](#) and start development with the online [CCS Cloud IDE](#). Other professional development environments are also available, such as TI's Eclipse-based [Code Composer Studio](#) and [IAR Embedded Workbench](#).

More information about the LaunchPad, as well as supported BoosterPacks, can be found at the [TI LaunchPad website](#).

Featured Hardware and Software Files

[MSP-EXP430G2 LaunchPad User Experience Software](#)

[MSP-EXP430G2 LaunchPad Hardware Design Files](#)

Features

The LaunchPad development board features:

- o 14-/20-pin DIP (N) socket
- o Built-in flash emulation for debugging and programming
- o 2 programmable LEDs
- o 1 power LED
- o 1 programmable button
- o 1 reset button

Supports MSP430G2xx2, MSP430G2xx3, and MSP430F20xx devices in PDIP14 or PDIP20 packages

The LaunchPad's integrated emulator interface connects flash-based MSP430 Value Line devices to a PC for real-time, in-system programming and debugging via USB.

Includes one mini USB cable to interface with a PC.

Included MSP430G2xx device features:

[MSP430G2553IN20](#) – 16kB Flash, 512B RAM, interruptible GPIOs (capacitive sense-capable), 16-bit timers, 8ch 10-bit ADC, Comparator, Serial Communication (USCI – I2C, SPI & UART) & more

[MSP430G2452IN20](#) – 8kB Flash, 256B RAM, interruptible GPIOs (capacitive sense-capable), 16-bit timers, 8ch 10-bit ADC, Comparator, Serial Communication (USI – I2C & SPI) & more

Included MSP430G2xx devices feature preloaded sample programs.

Free downloadable versions of [IAR Kickstart](#) and [Code Composer Studio Version 5](#) integrated development environments are available and include an assembler, linker, simulator, source-level debugger, and C-compiler. These free IDEs are unrestricted on MSP430 Value Line devices.

RoHS compliant

What's Included

[MSP430G2553IN20](#) flash device (preloaded with sample program)

[MSP430G2452IN20](#) flash device (preloaded with sample program)

10-pin PCB Connector (2 male/2 female)

32kHz crystal

LaunchPad Development board (MSP-EXP430G2)

LaunchPad sticker

Mini USB cable

QuickStart Guide

Order Now

Part Number	Buy from Texas Instruments or Third Party	Buy from Authorized Distributor	Status
MSP-EXP430G2: MSP430 LaunchPad Value Line Development kit	\$9.99(USD) Buy from TI	Pricing may vary. Buy from distributor	ACTIVE
Contact a Distributor <input type="text" value="Alabama"/> <input type="button" value="Go"/>			

TI's [Standard Terms and Conditions for Evaluation Modules](#) apply.

Technical Documents

Application notes (5)

Title	Abstract	Type	Size (KB)	Date	Views
-------	----------	------	-----------	------	-------