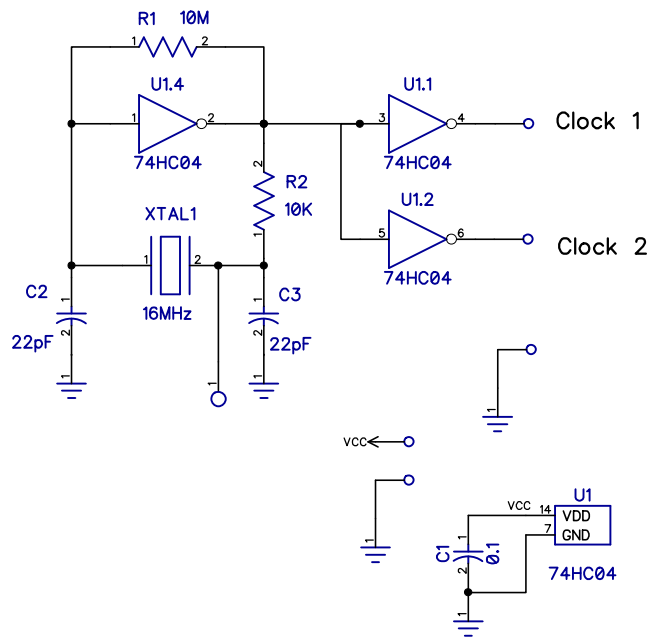


2

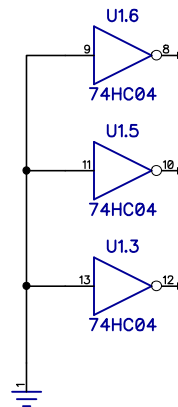
1

B

B



Crystal Oscillator  
 Tested: 2MHz to 16MHz  
 JM 5/9/2018



For RC Oscillator (around 1 KHz)

1. U1: Use 74HC14 instead of 74HC04.
2. R2: remains 10K.
3. XTAL1: Use 10K trim pot instead of xtal.
4. C2: Use 4700pF instead of 22pF.
5. C3: not loaded.
6. R1: not loaded.

A

A

2

1